

# I-Bus: corporate transport



Foto: M Finotto

- « **Pendelfonds** » (commuting fund supported by Flemish Government)
- **From idea to start up**
- **The I-Bus Hub**
- **I-Bus: current service offer**
- **Users**

- **The Flemish government and social partners established a Commuting Fund in 2006.**
  - The goal is the improvement of sustainable mobility in commuter traffic.
  - The I-Bus project was presented and approved by the advisory committee (with union representatives) and government in 2007.
  - The financial support (> 2.600.000 euro, 15% of the project) was used for the development of the project in general and the design and construction of the I-Bus Hub in particular.

- **Chambre of Commerce - VOKA**

- The idea to group the collective corporate transport in the Antwerp harbour area was launched by employers.

- **The participating companies**

- 6 companies decided to develop this initiative, and group the transport of their employees.
- BAYER EVONIK INEOS LANXESS MONSANTO SOLVAY

- **VZW I-Bus**

- Establishment of the VZW on 18 december 2008
- Transportation of employees since 21 december 2009

## ■ The Hub

- Central location where travellers switch busses to their next destination (Home – Hub – Work – Hub – Home)
- Total surface: 11.000 m<sup>2</sup>
- 31 busterminals
- Special designed platforms (lifted) to enter and exit the bus safely
- Straight forward and clear signs

- **4<sup>th</sup> august 2009: contractor starts the construction.**



- **21<sup>th</sup> december 2009: The kick off**

# The Hub: The construction



- **The bus terminals:**

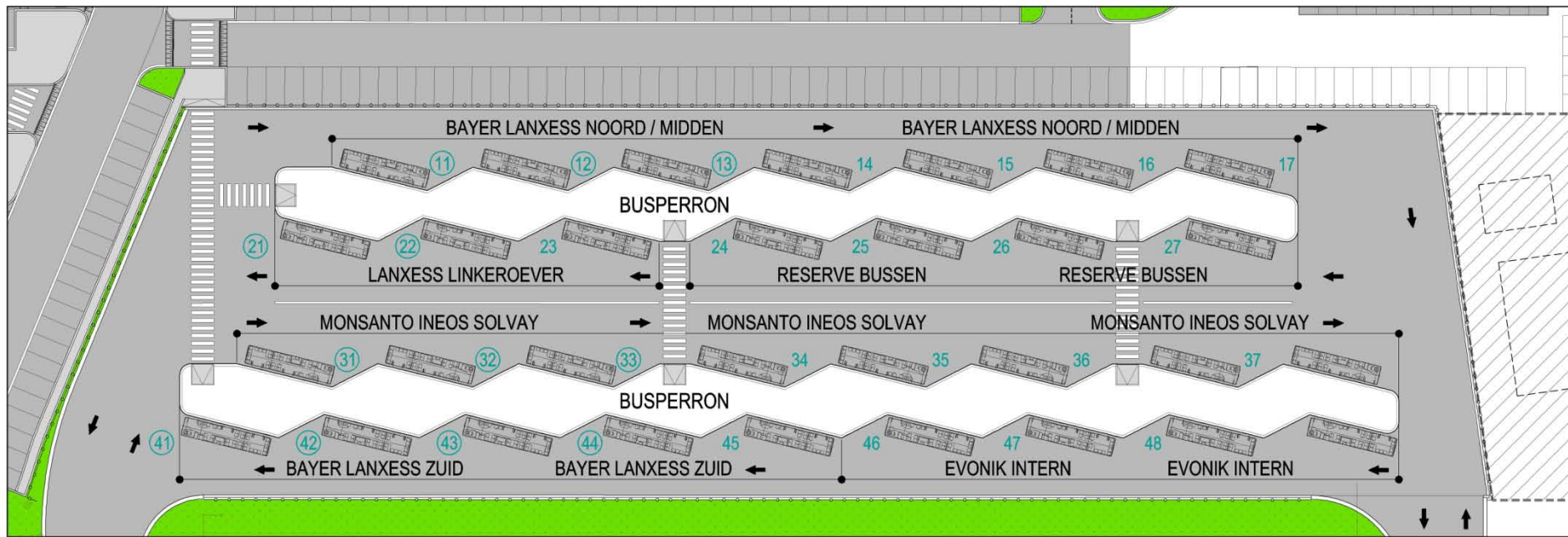
- Each bus terminal displays the reference for the day and/or shift service.
- Each terminal is linked to a specific company.

- **The busses:**

- Each route has its specific reference number.
- Each bus/driver has a fixed location when arriving and leaving the Hub.



# The Hub: Operational



# The Hub: Accomodation

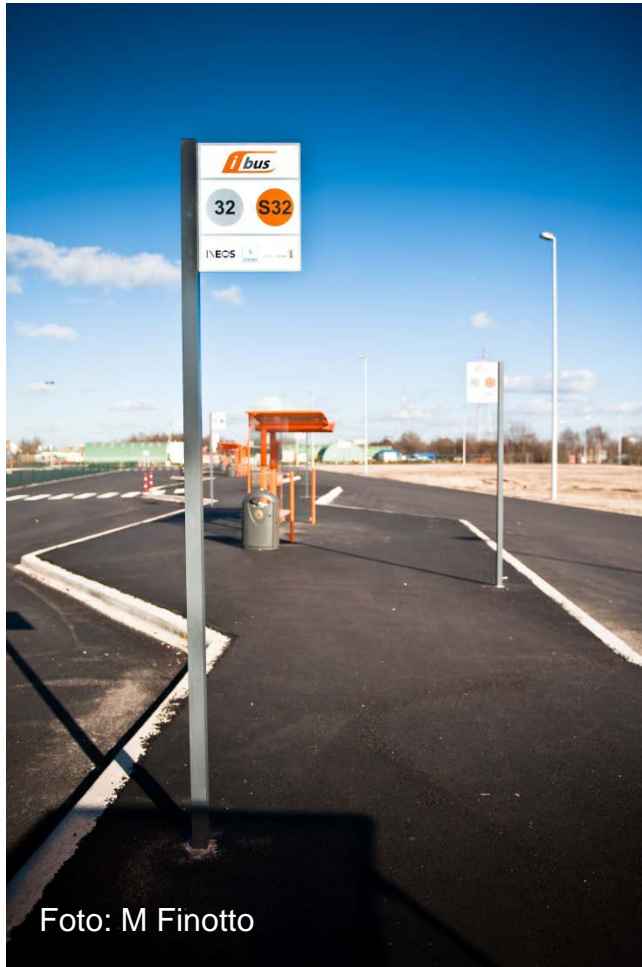
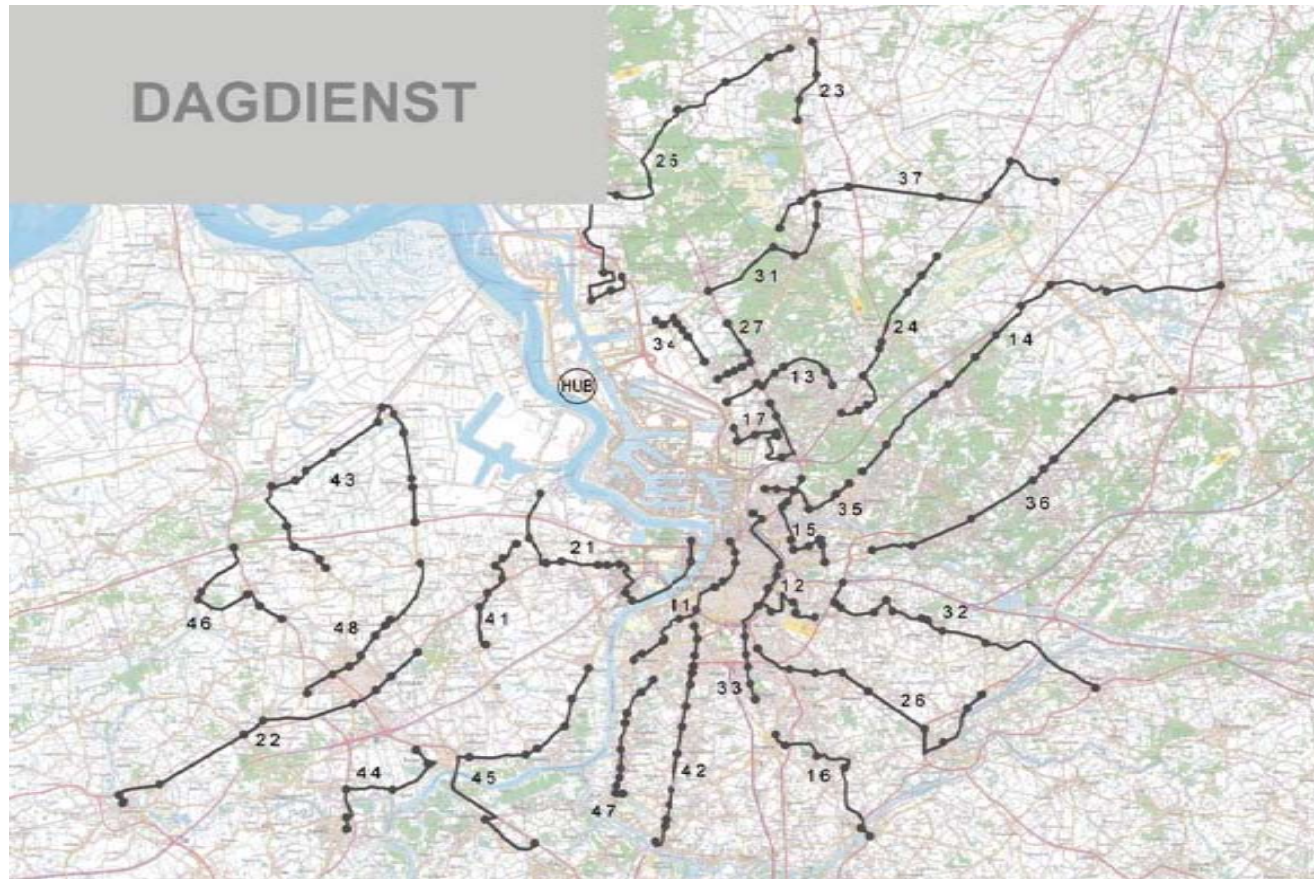


Foto: M Finotto

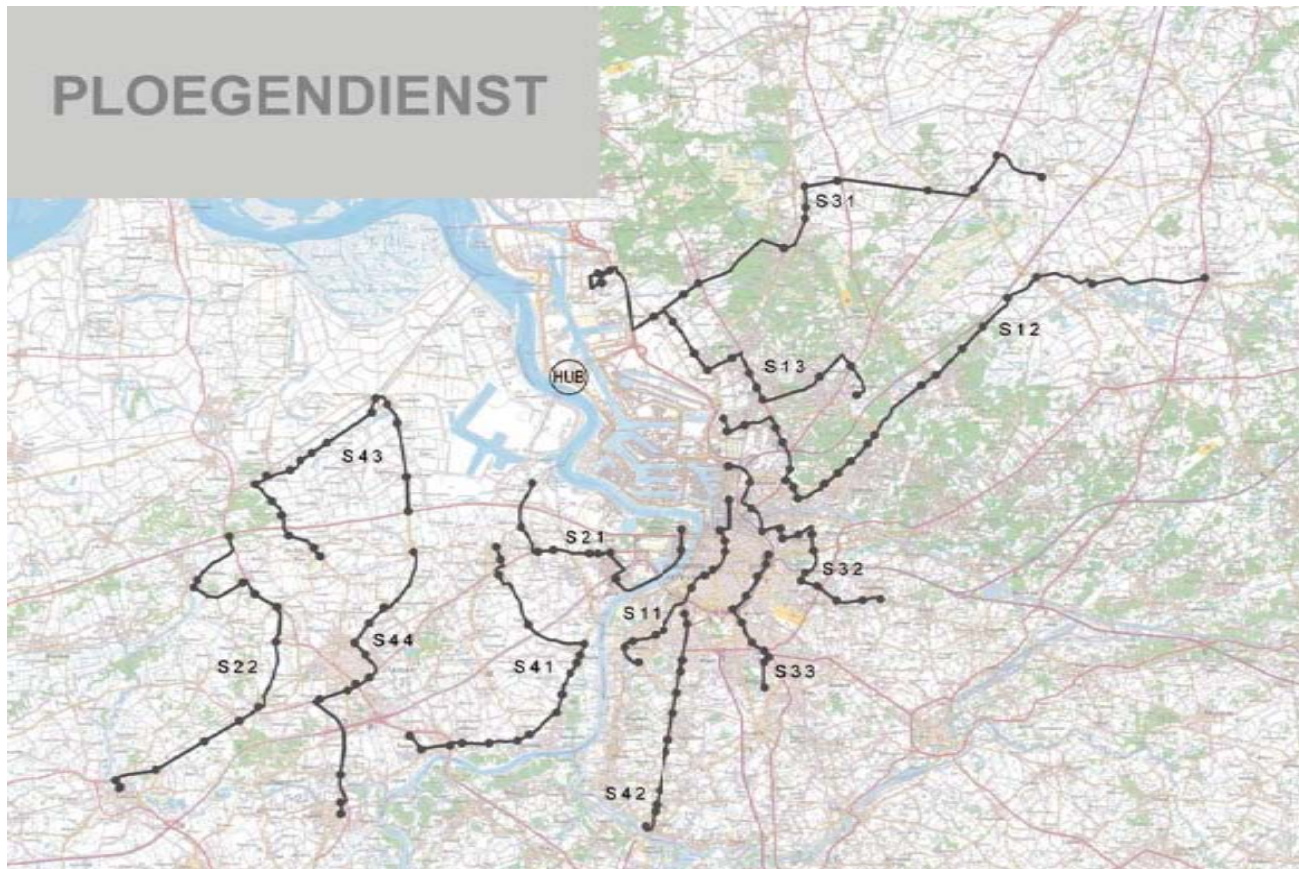


Foto: M Finotto

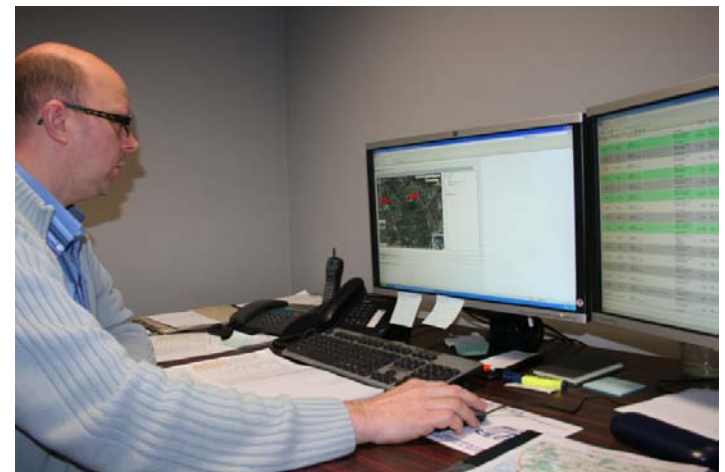
- Day routes
  - 29 day routes



- **Shift routes**
  - 12 shift routes (3 times a day)



- **2 buscompanies in close cooperation**
  - 26 new busses were purchased for this project (compliant to the Euro 5 emission standards)
  - 55 busses were equipped specifically for I-Bus (Track & Trace, Logo, ...)
  - Experience for decades in commuting
  - Central dispatching
  - Good price



- Track & Trace equipment
  - Follow up: time shedule busses
  - Follow up: complete routes
  - Registration of each users by personalise button
  
- Reports
  - Report users
    - Per company, per route, per timefragment....
    - Follow up occupation, capacity, ...
  - Report
    - Follow up and amendments of the routes
  
- Result: finetuned service for all users

- **« Committee of discussion »**

- Each company has one representative for the employees and one for the employers.
- Discussion/negotiation on all structural changes.
- For unions very important because of information and discussion

- **6 participating companies**
  - 4000 employees
  - Of which 1835 are working in shifts
- **Registrations**
  - 3166 registrations in the I-Bus database



# The users: figures

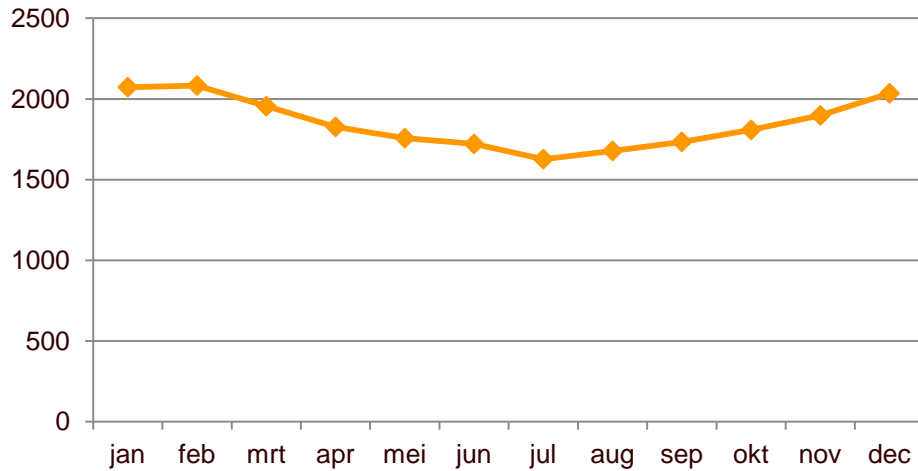


2010			2011		
	passengers	Unique users		passengers	Unique users
jan	43493	2073	jan	36894	1893
feb	39616	2083	feb	35265	1854
mrt	40964	1955	mrt	35025	1879
apr	31176	1827	apr	29750	1782
mei	28802	1757	mei	31492	1702
jun	29727	1721	jun	26860	1645
jul	25587	1627	jul	24790	1619
aug	27166	1678	aug	26045	1660
sep	30734	1734	sep	29317	1691
okt	33236	1808	okt		
nov	31487	1898	nov		
dec	31115	2035	dec		

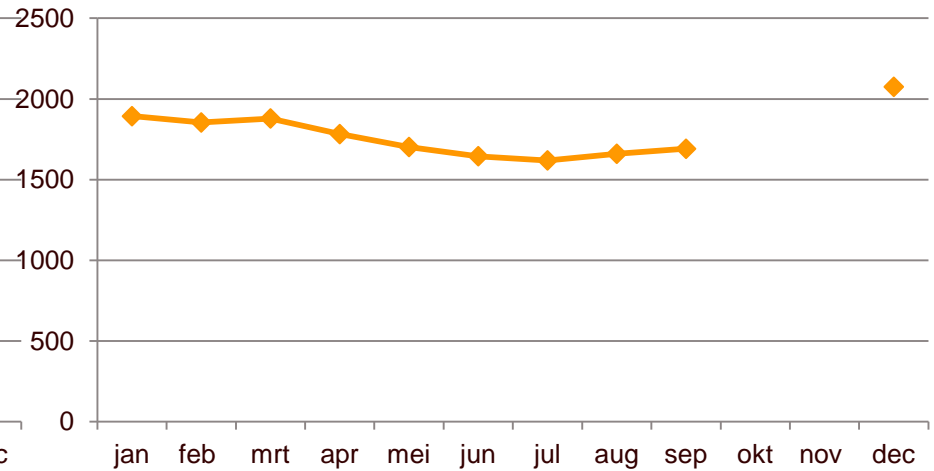
Between 01/01/10 and 12/10/11 **2735 persons used our services**

## Unique users

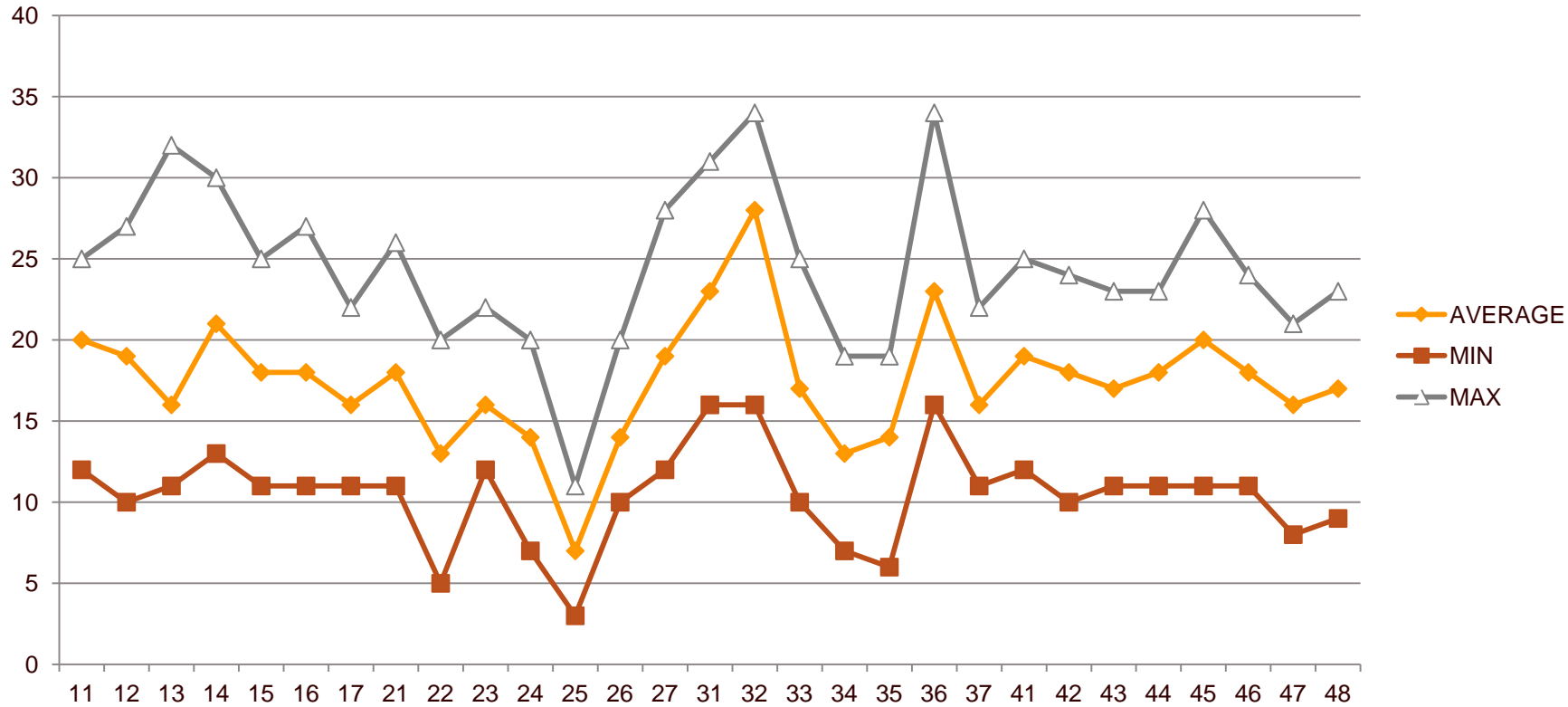
2010



2011



## Capacity utilisation degree: Daybusses



Average: 17,44 persons per bus  
 10,48 min  
 24,48 max



# I-Bus: Mobility at its best

